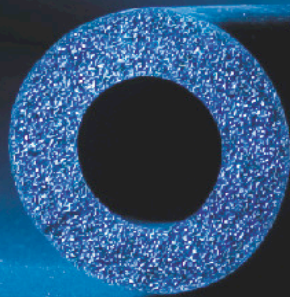


PREMIUM PERFORMANCE INSULATION

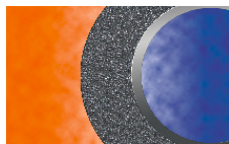
Premium
Performance
Insulation

Durkflex[®]

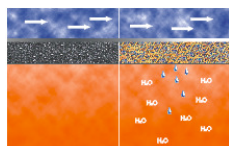


Durkflex is a flexible closed cell elastomeric insulation, designed to reduce undesirable heat gain in chilled water systems, cold water plumbing, HVAC/R, and industrial equipments. When properly installed, this product also provides condensation and frost control on cold surface. It's also designed to effectively reduce heat loss for hot water plumbing, liquid heating and dual temperature piping.

FEATURES



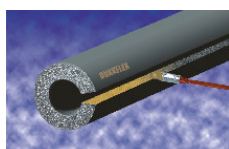
- **Low and Stable Thermal Conductivity**
Durkflex insulation has low density and uniquely formed closed cell structure. Low thermal conductivity can be maintained through out product life time.



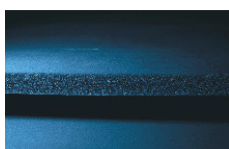
- **High Resistance to Moisture Vapor Flow**
The unique closed cell structure of Durkflex insulation and the dense skins act as multilayer of moisture vapor barriers to maintain stable thermal conductivity during the service life without the need of extra vapor barrier in most applications.



- **Fire Safety**
Durkflex insulation is specially manufactured to meet the BS476 Part 7 class 0, Class 1, ASTM E84 and other standards. It does not melt nor drip flaming balls when burning, therefore does not cause fire transfer.



- **Easy installation**
The smooth surface and flexibility of Durkflex enable quick and easy installation on regular and irregular pipelines and equipments. It also offers neat appearance after the installation.



- **Environmental friendly /Improved IAQ**
Durkflex insulation is CFC/HCFC free, non-porous, fiber free, dust free and resistant to mold and fungi growth, and does not cause skin irritations and health hazard. Effectively improved indoor air quality can be achieved.

TECHNICAL DATA

Physical Properties	Unit	Data	Test Methods
Thermal Conductivity			
-20° C	W/m*K	0.031 (0.225)	ASTM C518 / C177
0° C	(BTU*in/hr*ft ²)	0.034 (0.240)	
40° C		0.038 (0.260)	
Water Vapor Permeability	Kg/s*m*Pa	1.16x10 ⁻¹³	ASTM E96
Moisture Resistance Factor		≥7300	
Water Absorption (Volume)	%	≤0.2	
Flammability and Smoke Density		Class 1 / Class 0 25 / 50	BS476 Part 7 ASTM E84
Density	Kg/m ³ (lbs/ft ³)	50 ~ 70 (3.125 – 4.375)	ASTM D1667
Mold Resistance		Good	
Fungi Resistance		Good	ASTM G21
UV & Weather Resistance		Good	ASTM G23
Ozone Resistance		Good	
Dimensional Stability	%	0 – 7%	ASTM C534
Temperature Range	° C (° F)	-50 ~110 (-58 ~ 230)	



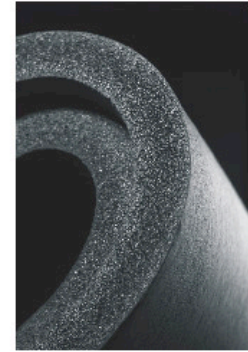
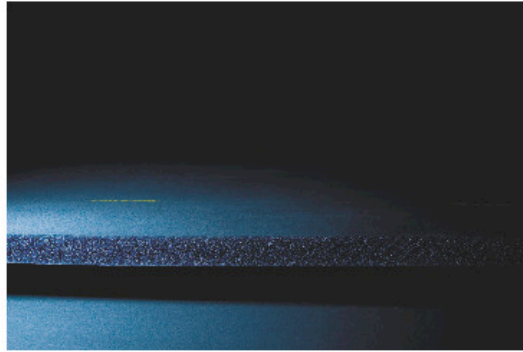
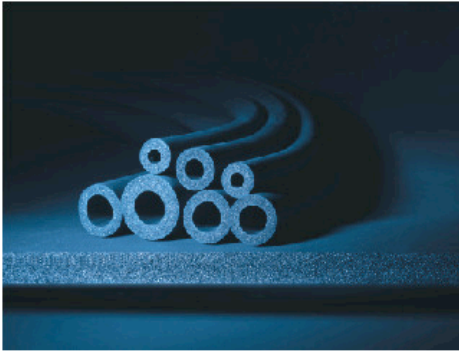
Thickness Recommendation

(For condensation control)

Pipe Size	Line Temp. 10°C 50°F	Line Temp. 2°C 35°F	Line Temp. -18°C 0°F	Line Temp. -29°C -20°F
Mild Conditions (Max 27°C (80°F) and 50% RH. Typical mild conditions are most air conditioned spaces and arid climates.)				
3/8" thru 2-5/8"ID (10-65mm)	10mm (3/8")	10mm (3/8")	13mm (1/2")	19mm (3/4")
Over 2-5/8"ID (>65mm)	13mm (1/2")	13mm (1/2")	13mm (1/2")	19mm (3/4")
Normal Conditions (Max 29°C (85°F) and 70% RH.)				
3/8" thru 1-1/8"ID (10-28mm)	10mm (3/8")	13mm (1/2")	19mm (3/4")	25mm (1")
1-1/8" thru 2-1/8"ID (28-54mm)	10mm (3/8")	13mm (1/2")	25mm (1")	25mm (1")
2-1/8" thru 2-5/8"ID (54-65mm)	10mm (3/8")	13mm (1/2")	25mm (1")	32mm (1-1/4")
Over 2-5/8"ID (>65mm)	13mm (1/2")	19mm (3/4")	25mm (1")	32mm (1-1/4")
Severe Conditions (Max 32°C (90°F) and 80% RH.)				
3/8" thru 1-5/8"ID (10-40mm)	19mm (3/4")	25mm (1")	38mm (1-1/2")	38mm (1-1/2")
1-5/8" thru 3-5/8"ID (40-90mm)	19mm (3/4")	25mm (1")	38mm (1-1/2")	44mm (1-3/4")
Over 3-5/8"ID (>90mm)	19mm (3/4")	25mm (1")	38mm (1-1/2")	50mm (1-2")

- Under conditions of high humidity, additional thickness of insulation may be required.
- Thicknesses greater than 25mm (1") are sleeved or multiple layer applications.

DURKFLEX PRODUCT SERIES



Durkflex Tube Insulation

Durkflex Tubes are available in inner diameter from 1/4" (6mm) to 3 1/2" (89mm) and wall thickness from 1/4" (6 mm) to 1 1/4" (32 mm), in a length of 6 feet or 2 meters.

Durkflex/FE I__0__ (e.g. I25042 represents 6' long, ID42mm, thickness 25mm tube)

Durkflex/FE M__0__ (e.g. M25042 represents length 2 meters, ID42mm, thickness 25 mm tubes)

Durkflex Roll Sheet Insulation

Durkflex Roll Sheets are available in continuous roll sheet with wall thickness from 1/4" to 1" (6mm to 25mm), and width 1.0m, and 1.2m (4').

Durkflex/FE R_____ (e.g. R09100 represents roll sheets with thickness of 09mm, width of 1.0 meter)

(e.g. R25120 represents roll sheets with thickness of 25mm, width of 4')

Durkflex Flat Sheet Insulation

Durkflex Flat Sheets are available in 3'x4' flat sheet with wall thickness from 1/4" to 1" (6mm to 25mm).

Durkflex/FE S__ (e.g. S25 represents flat sheet with thickness of 25mm)

Durkflex/FG (BS Class 0) and Durkflex/FE (BS Class 1), and products which meet other national standards (Such as China, South Korea, Australia) can be provided upon request.

DURKFLEX ACCESSORIES



Durkadhesive

Specifically designed for Durkee insulation products. Optimum performance can be achieved when properly used.

Volume/can	Cans/carton
3.78L	4



Durktape BI

Cloth line tape for gap covering or sealing insulation joints.

width	length	Thk	Roll/carton
50mm	30m	3mm	5



Durktape JF

Cloth line tape for gap covering or sealing insulation joints.

width	length	Roll/carton
35mm	30m	50

DURKFLEX STANDARD PACKING

Durkflex Insulation Tube

(Length: 6' or 2 m each piece)

ID Size (Copper tubes)	IPS (Steel pipe)	ID Durkflex	3/8"(9mm)wall		1/2"(13mm)wall		3/4"(19mm)wall		1"(25mm)wall		1-1/4"(32mm)wall	
Inch	Inch	mm	Code	Pcs/Ctn	Code	Pcs/Ctn	Code	Pcs/Ctn	Code	Pcs/Ctn	Code	Pcs/Ctn
3/8	1/8	9	09009	130	13009	85	19009	45				
1/2	1/4	13	09013	110	13013	70	19013	40				
5/8	3/8	16	09016	90	13016	60	19016	35	25016	24	32016	20
3/4		19	09019	80	13019	55	19019	32	25019	22	32019	18
7/8	1/2	22	09022	70	13022	50	19022	30	25022	20	32022	17
1		25	09025	60	13025	45	19025	27	25025	18	32025	16
1-1/8	3/4	28	09028	55	13028	38	19028	24	25028	18	32028	15
1-1/4		32	09032	45	13032	35	19032	22	25032	16	32032	14
1-3/8	1	35	09035	40	13035	33	19035	20	25035	15	32035	12
1-1/2		38	09038	36	13038	31	19038	18	25038	13	32038	11
1-5/8	1-1/4	42	09042	35	13042	30	19042	18	25042	13	32042	11
1-7/8	1-1/2	48	09048	30	13048	24	19048	14	25048	11	32048	9
2-1/8		54	09054	24	13054	20	19054	12	25054	10	32054	8
2-1/4		57			13057	18	19057	11	25057	10	32057	8
2-3/8	2	60			13060	16	19060	10	25060	9	32060	7
2-5/8		67			13067	12	19067	9	25067	9	32067	7
3	2-1/2	76					19076	8	25076	7	32076	6
3-1/2	3	89					19089	6	25089	6	32089	5

- Note:
1. Other dimensions are available upon request.
 2. Carton size for 2m tubes is 2.05mX0.42mX0.32m, for 6' tubes is 75" x 17" x 13".
 3. Class 1 and class 0 Durkflex (based on BS476 standards) are both available.

Durkflex Standard Sheet Roll Insulation

Width: 4', Carton Size 50"x 17" x 17".

Wall thickness	1/4" (6mm)	3/8" (9mm)	1/2" (13mm)	3/4" (19mm)	1" (25mm)	1-1/4" (32mm)
Code	R06120	R09120	R13120	R19120	R25120	R32120
Length (m/ctn)	20	13	9	6	5	4

- Note:
1. 1/4" sheet has skin on one side at factory option.
 2. Standard 1 meter wide sheet rolls are available in 1.05m x 0.42m x 0.42m cartons.
 3. Sheet roll length and width can be customized.

Durkflex Standard Flat Sheet Insulation

Size: 3'x 4', Carton Size 50"x 39" x 6".

Wall thickness	1/4" (6mm)	3/8" (9mm)	1/2" (13mm)	3/4" (19mm)	1" (25mm)	1-1/4" (32mm)
Code	S06	S09	S13	S19	S25	S32
QTY (piece/ctn)	20	14	10	7	5	4

- Note: 1/4" sheet has skin on one side at factory option.



INSTALLATION

Durkflex pipe insulation in un-slit tubular form, with factory applied talcum powder in the smooth inner surface, slides easily over pipes or tube for quick installation. It can also be slit lengthwise with a sharp knife and snapped into place, when applied to existing lines at job site. All seams and butt joints are to be sealed with Durkadhesive.

Fitting covers are fabricated from miter cut tubes. Large diameter pipes, irregular shape parts are fabricated from Durkflex sheet.

Durkflex insulation is designed for moderate UV exposure applications without additional protection. A UV protective coating, jacketing or cladding is required for severe outdoor UV exposure applications, where optimum performance is desired. A conduit or other additional water vapor barrier protection may be necessary for underground application, or when installed on low temperature surfaces that are exposed to continuous high humidity.

Durkee International Industry Ltd.

Vancouver Branch

Address: 8141 Explorers Walk, Vancouver, BC V5S 4A9, Canada
Tel: 1 604 324 8048 Email: info@durkeintl.com
Internet: www.durkeintl.com

Durkee Insulation (China)

Address: No.1 Zisong Industry Zone, Hongshan District, Wuhan, Hubei, China
Tel: +86-27- 8749 8556 +86-20-6285 6775
Fax: +86-27-8780 1506 +86-20-6285 6776
Internet: www.durkee.com.cn

Manufacturer:

Durkee (wuhan) Insulation Material Co.,Ltd
Durkee (guangzhou) Insulation Material Co.,Ltd

